

LCLT and SARD
(Sustainable Agriculture
and Rural Development)

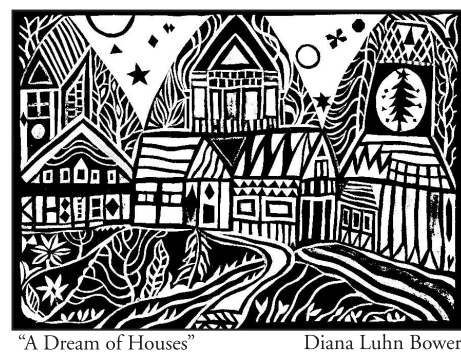
Lopez Community Land Trust
has initiated successful
agriculture-related
programs, including:



- Bee Safe Program, www.bee-safesjc.org
- Lopez Bounty, www.lopezbounty.org
- The premier Mobile Processing Unit (MPU), the first such unit to receive a USDA Grant of Inspection. The MPU, now owned by the Island Grown Farmers Cooperative, allows Lopez farmers to supply their community with healthy, wholesome, locally grown meats.
- This local Farm Products Guide.
- Lopez Fresh, a fresh food bank, now located with the Lopez Island Family Resource Center.
- Co-founded the LIFE Garden and Farm Program with the Lopez School District.
- The Grain Project, focusing on locally grown non-GMO grain and related equipment, appropriate to Lopez.
- The seed Library of non-GMO, locally appropriate seed.



To learn more about our SARD programs
and our internships, visit www.lopezclt.org.



"A Dream of Houses" Diana Luhn Bower

TIPS FOR VISITING FARMS

- We suggest calling ahead for directions, hours, and product availability.
- Please do not bring pets.

WHEN SHOPPING FOR LOCAL PRODUCTS

Look for the logo *Island Grown in the San Juans*, a membership organization committed to increasing local consumption of foods and farm products grown, raised or harvested in San Juan County.



Visit the Lopez, Orcas, and San Juan Farmers' Markets, the San Juan County Fair, and the Lopez Holiday Bazaar for a wide selection of goods.

For agricultural-related information contact WSU Extension, San Juan County at 360.378.4414 or <http://sanjuan.wsu.edu> or the San Juan Agricultural Resources Committee (ARC) at <http://www.sjarc.org>



LCLT was established in 1989. For information about LCLT affordable housing and sustainable agriculture programs or to become an LCLT member, please call or write:

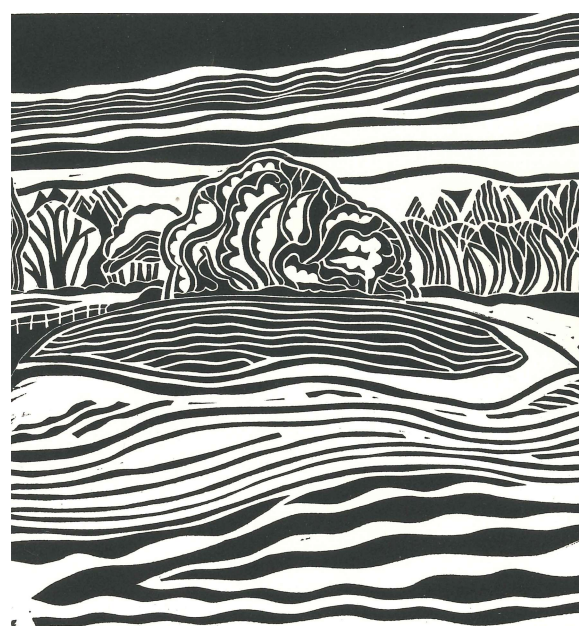
PO Box 25, Lopez Island, WA 98261
360.468.3723

LCLT@rockisland.com • www.lopezclt.org

Printed On Recycled Paper

LCLT 2015 - 2016

**Lopez Island
Farm
Products
Guide**



"Field with Willow Clump" Diana Luhn Bower

Buying local farm products is a healthy way to nourish yourself, your family, and your community. Use this guide to find homegrown & homemade goods on Lopez Island, Washington.

2015 - 2016 FARM PRODUCTS GUIDE

1. ARBORDOUN
SUSAN BILL
744 Richardson Rd. 468-2508
mail@arbordoun.com - www.arbordoun.com
We have been growing flowers and selling herbal products - Arbordoun's Calendula Cream and Silky Day Lotion, for 30 years. We grow both unique and the usual flowers for weddings and special events, and vend at the farmers market. Please call or email before visiting. Weekly flower CSA available.

2. BARN OWL BAKERY
SAGE ANNE DILTS & NATHAN HODGES
3042 Center Road 468-3492
granary@barnowlbakery.com
We are a wood-fired craft bakery making breads and pastries in the oldest and simplest traditions, yielding rich depth of flavor and real nutrition. All of our grains are wild leavened or sprouted before baking. Our ingredients are organic and regional, including Lopez grains and produce.

3. BUFFUM BROS. FARMS
GARY AND M.R. BUFFUM
618 Channel Road 468-2320
buffumbros@rockisland.com
We produce grains, straw, hay, cows and pigs. Please call for availability.

4. CARTER FARM
RICHARD & JEANNA CARTER
1731 Center Road 468-3516
richardandjeanna@gmail.com
We specialize in luxurious Romney sheepskins and grass-fed locker lamb. Our long-lasting and machine-washable sheepskins are generally in stock and available at the farm. Please call before visiting. Call or email to order a half or whole lamb for your freezer.

5. CHICKADEE PRODUCE
CHARLES & CLARISSA MISH
203 Chickadee Lane 468-3297
cmish@aol.com
Fresh biodynamic fruit (pears, plums, apples, quince) and vegetables in season. Soil enriched by 89 Sea Crop trace minerals. Potatoes a specialty: Yukon Gold, Yellow Finn, Nicola, German Butterball, fingerlings, and others. Available at local eateries and our 10-acre homestead. Please call before visiting.

6. CROWFOOT FARM
ERIC HALL & ELF FAY
3759 Port Stanley Road 468-4748
Certified organic. Shuksan strawberries available in June. Tristar strawberries available in August. Raspberries available mid-to-late July. U-Pick Wednesdays and Saturdays, 9-3, or until sold out. Call for recorded updates.

7. DANAH FELDMAN & RON NORMAN
166 Gloria Lane 468-3642
norfeld@centurytel.net
Danah's 2-1/2 acre garden includes a zillion flowers, a large vegetable garden and a full greenhouse. She sells tomato and other vegetable starts in the spring, and tender, luscious basil, all grown organically, throughout the growing season. Ron Norman's metal-sculpture studio is also on site. Please call before visiting.

8. DOUBLE R BAR RANCH
REX & DAWN RITCHIE
5430 Fisherman Bay Road 468-2702
islandrancher@gmail.com
Our farm produces grass-fed Suffolk lambs available at Blossom Grocery. We also raise grass-fed, dry-aged Murray Grey cattle available in quarter, half, and whole. Give us a call if you're looking for a healthier lifestyle by eating healthier food. Please call before visiting and for availability.

9. FLINT BEACH OHANA LLC
(No map designation)
SALLY REEVE
778 Flint Road 468-3270
reeve@msn.com
Offering pasture raised USDA inspected Romney lamb, with the "essence" of salt spray from the Straits, and farm fresh eggs. Visit us at the Lopez Farmers' Market or call for orders. Occasionally have yearling Romney rams and ewes for sale. Have ground mutton which is great for pet food.

10. FRUIT CITY FARM
LEVI & RONNI
1710 Ferry Road 468-3557
fruitcityfarm@gmail.com
Many varieties of organically grown apples, plums and apple products available late summer through fall. Please call before visiting, or to place an order.

11. HELEN'S FARM (No map designation)
BLAKE & JULIE JOHNSTON
875 Davis Bay Road 468-2857
lopezchicken@gmail.com
We raise vegetables on about 5 acres using techniques and materials that show respect for the health of our farm, island, and community. We also raise broiler chickens and pigs, fed organically, as well as grass-fed cattle. Find us at the farmers market, or contact us via email or facebook!

12. HORSE DRAWN FARM
KEN AKOPIANTZ & KATHRYN THOMAS
2823 Port Stanley Road 468-3486
swiffibay@yahoo.com
We sustainably raise vegetables, herbs, flowers, lamb, pork, and beef on our animal-powered farm. Our products are available at the farm stand (self-serve, open day and night), the Lopez Farmers' Market, Blossom Grocery, and local restaurants. Call for product availability, farm tours or more information.

13. ISLAND FIBERS
DEBBIE HAYWARD & MAXINE BRONSTEIN
4208 Port Stanley Road 468-2467
fibers@islandfibers.com
www.islandfibers.com
Specializing in Lopez-grown wool, we create one-of-a-kind yarns, garments, and accessories that are dyed, spun, knit, woven, and felted by hand. We offer classes at our studio, where we also sell supplies and tools for spinners, weavers, knitters, and felters. Studio open year-round by appointment.

14. J&M LOPEZ OCCASIONAL FRUIT
JIM & MARGARET BIRKEMEIER
29 Chickadee Lane 468-3775
We grow apples, Asian pears, blueberries, nectarines, and peaches with occasional success. Please call before visiting or to check availability.

15. JONES FAMILY FARMS
NICK & SARA JONES
1934 Mud Bay Rd. 468-0533
info@jffarms.com - <http://www.jffarms.com>
Quality meats & seafood. Grass fed beef, goat, and lamb. Pastured pork & poultry. Available at county-wide grocery stores, and restaurants. Direct sales from the farm or call to order. Grain, produce, and flowers also available. Visitors welcome.

16. LOPEZ ISLAND SHELLFISH FARM & HATCHERY
(No map designation)
203 Shoreland Drive 268-2722
shellfish@jffarms.com - <http://www.jffarms.com>
The finest Northwest shellfish, fish and seafood. Pacific, Euro Flat, Olympia oysters, Manila & butter clams, and fresh local fish in season. Direct sales from the farm and products available throughout the county. Hatchery tours. Visitors welcome.

17. LOPEZ COMMUNITY LAND TRUST SEED LIBRARY
25 Tuatara Road 468-3723
seedlib@rockisland.com - www.lopezclt.org
A community seed project created to strengthen our local food system through the preservation and development of locally adapted open-pollinated crop varieties. The Seed Library is a safe and organized place to store seeds and is open to members for borrowing or returning seeds as needed.

18. LOPEZ HARVEST
CHRISTINE LANGLEY
875 Davis Bay Road 468-2857
lopezharvest@rockisland.com
Diverse, organic herbs and salad greens grown with a commitment to sustainable land stewardship and community health. Available at Blossom Grocery, Lopez Village Market and Lopez restaurants.

19. LOPEZ ISLAND FARM
BRUCE DUNLOP
193 Cross Road 468-4620
bruce@lopezislandfarm.com
www.lopezislandfarm.com
Grass-fed lamb, pasture-raised pork, and a variety of gourmet specialty food products. Available at the farm store, open daily. No need to call before visiting.

24. S & S HOMESTEAD FARM
ELIZABETH SIMPSON
HENNING HENNINGSDORF
2143 Lopez Sound Road 468-3335
sshomestead@rockisland.com
www.sshomestead.org
Our 50-acre biodynamic, farm produces seedlings, herbs, flowers, fruit, vegetables, cheese, eggs, livestock, grain, custom meats (beef, pork, lamb) and hay, and provides education for sustainable living. We also offer biodynamic soil preparations for sale.

25. SUNNYFIELD FARM
ANDRE & ELIZABETH ENTERMANN
6363 Fisherman Bay Road 468-2764
sunnyfieldonlopez@gmail.com
www.sunnyfieldonlopez.com
Licensed Grade A raw milk goat dairy. Seasonal farmstead goat cheese available on farm, and at Farmers' Market. Inquire about goat meat. Call to arrange visits.

26. SWEET GRASS FARM
SCOTT MEYERS & BRIGIT WARING
866 Bakerview Road 468-4450
scott@rockisland.com - www.sgfbeef.com
We raise and sell grass-finished Wagyu "Kobe" beef. Please visit our website for details. Haylage, straw, and compost are also available. Visitors are welcome.

27. SWEETBRIAR FARM
TAMARA BUCHANAN & DOUG BENOLIEL
4968 Center Road 468-3091
thesweetbriarfarm@gmail.com
Select local, heirloom, Asian, and European veggies, fruits, and berries organically and sustainably grown. Seasonally available at our farm stand or with a membership. Email us for a weekly "what's available" list, opening dates & hours, or information on joining. Free farm tours monthly July to September.

28. T & D FARMS
TODD GOLDSMITH & DIANE DEAR
1844 Bakerview Road 468-4775
toddanddiane@tanddfarmslopezisland.com
www.tanddfarms.com
Sustainably raised eggs, vegetables, fruit, hay, and plant starts produced on land protected by a San Juan Preservation Trust easement. Available through subscription and at local stores and restaurants. Please call before visiting or for subscription information.

29. WET WOOL FARM
(No map designation)
AUDREY SWANBERG & MICHELLE McDARMONT 468-3133
wetwool@me.com - www.wetwoolfarm.com
We offer lamb raised entirely on Lopez Island pasture. Your lamb will be cut and wrapped to your specifications through the USDA inspected Islands Grown Farmers Co-op. Email us for availability.

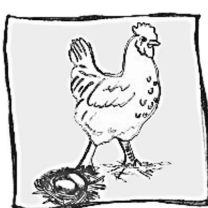
30. WHISPERS OF NATURE
SUSIE & NICK TEAGUE 468-0550
220 Fisherman Bay Road
whispersofnature@gmail.com
www.whispersofnatureherbs.com
We grow herbs and plants using organic, earth-friendly, sustainable practices and provide medicinal herbal remedies and healing practices used by ancient traditions. Seasonal hours. Please call, email or see website for details.

31. WHITE OWL GARDEN
(No map designation)
HEIKE UHLIG 468-2170
www.whiteowlgarden.com
Organically grown produce from a tiny market garden that generates (literally) a ton of food on one-tenth of an acre. Available fresh at the Farmers' Market, via subscriptions, and special orders.

32. WINDY BOTTOM FARM
KIM BAST & TODD KEGERREIS
4662 Center Road 468-4452
kimbast@rockisland.com
Windy Bottom is a small farm growing at least 12 varieties of garlic, vegetables, and herbs. We raise a mixed herd of dairy and meat goats: Nubian, Alpine, and Kiko; laying hens; and a handful of heritage breed pigs. Please call or email with any inquiries and before visiting.



TO USE THIS GUIDE Select products that interest you from the categories listed. Turn to the map and alphabetical farm listings. The specific farm entries will give you product availability and contact information.



POULTRY & EGGS

- Flint Beach Ohana
- Helen's Farm
- Jones Family Farms
- S & S Homestead Farm
- T & D Farms
- Windy Bottom Farm



PORK

- Buffum Brothers Farms
- Helen's Farm
- Horse Drawn Farm
- Jones Family Farms
- Lopez Island Farm
- Midnight's Farm
- Windy Bottom Farm



PLANTS & FLOWERS

- Arbordoun
- Danah Feldman & Ron Norman
- Helen's Farm
- Horse Drawn Farm
- Jones Family Farms
- S & S Homestead Farm
- Sweetbriar Farm
- T & D Farms
- Whispers of Nature
- Windy Bottom Farm



NATURAL FIBER PRODUCTS

- Carter Farm
- Island Fibers
- One Clay Hill Farm
- Redgate Farm



HERBS

- Danah Feldman & Ron Norman
- Horse Drawn Farm
- S & S Homestead Farm
- Whispers of Nature
- Windy Bottom Farm



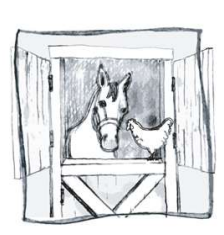
WINE, DAIRY & FARM PRODUCTS

- Arbordoun
- Barn Owl Bakery
- Lopez Island Farm
- Lopez Island Vineyards
- Midnight's Farm
- Stoncrest Jam
- Sunnyfield Farm
- S & S Homestead
- Whispers of Nature



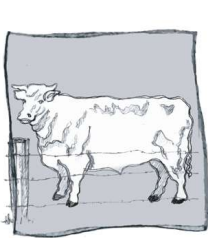
VEGETABLES

- Chickadee Produce
- Danah Feldman & Ron Norman
- Helen's Farm
- Horse Drawn Farm
- Jones Family Farms
- Lopez Harvest
- Midnight's Farm
- S & S Homestead Farm
- Sweetbriar Farm
- T & D Farms
- White Owl Garden
- Windy Bottom Farm



LIVESTOCK & BOARDING FACILITIES

- Buffum Brothers Farms
- Flint Beach Ohana
- Redgate Farm
- S & S Homestead Farm



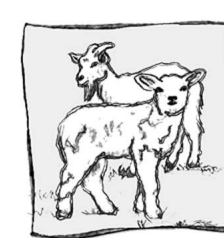
BEEF

- Buffum Brothers Farms
- Double R Bar Ranch
- Helen's Farm
- Horse Drawn Farm
- Jones Family Farms
- Midnight's Farm
- S & S Homestead Farm
- Sweet Grass Farm



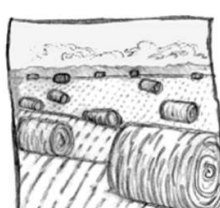
SEAFOOD

- Jones Family Farms



LAMB & GOAT

- Carter Farm
- Double R Bar Ranch
- Flint Beach Ohana
- Horse Drawn Farm
- Jones Family Farms
- Lopez Island Farm
- One Clay Hill Farm
- Redgate Farm
- S & S Homestead Farm
- Sunnyfield Farm
- Wet Wool Farm
- Windy Bottom Farm



HAY, GRAIN, STRAW

- Buffum Brothers Farms
- Horse Drawn Farm
- Jones Family Farms
- Midnight's Farm
- S & S Homestead Farm
- T & D Farms

SEE OTHER SIDE FOR MAP & DETAILED LISTINGS